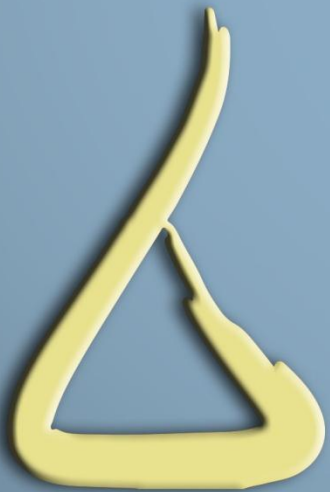
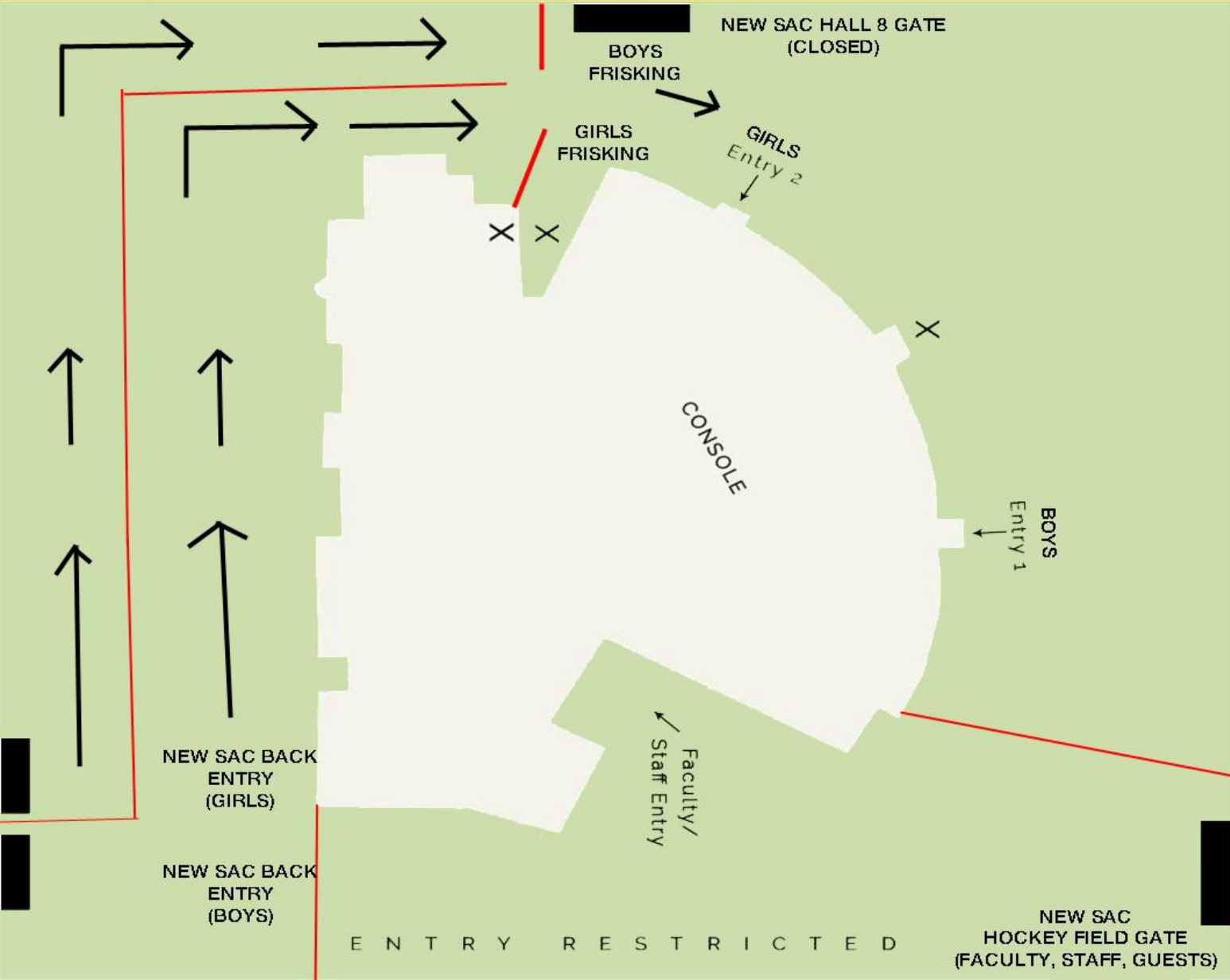


Security Plan

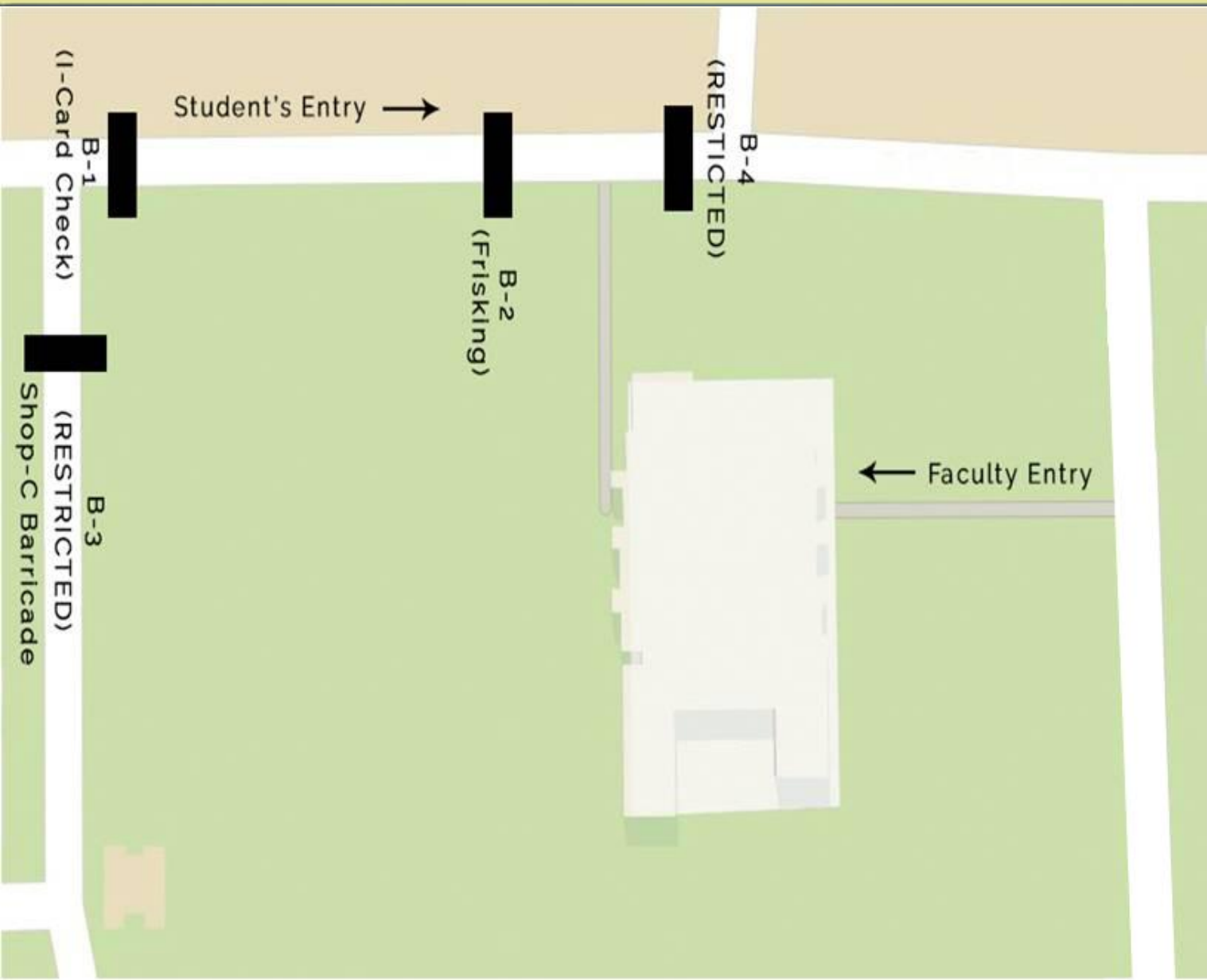
Antaragni`16



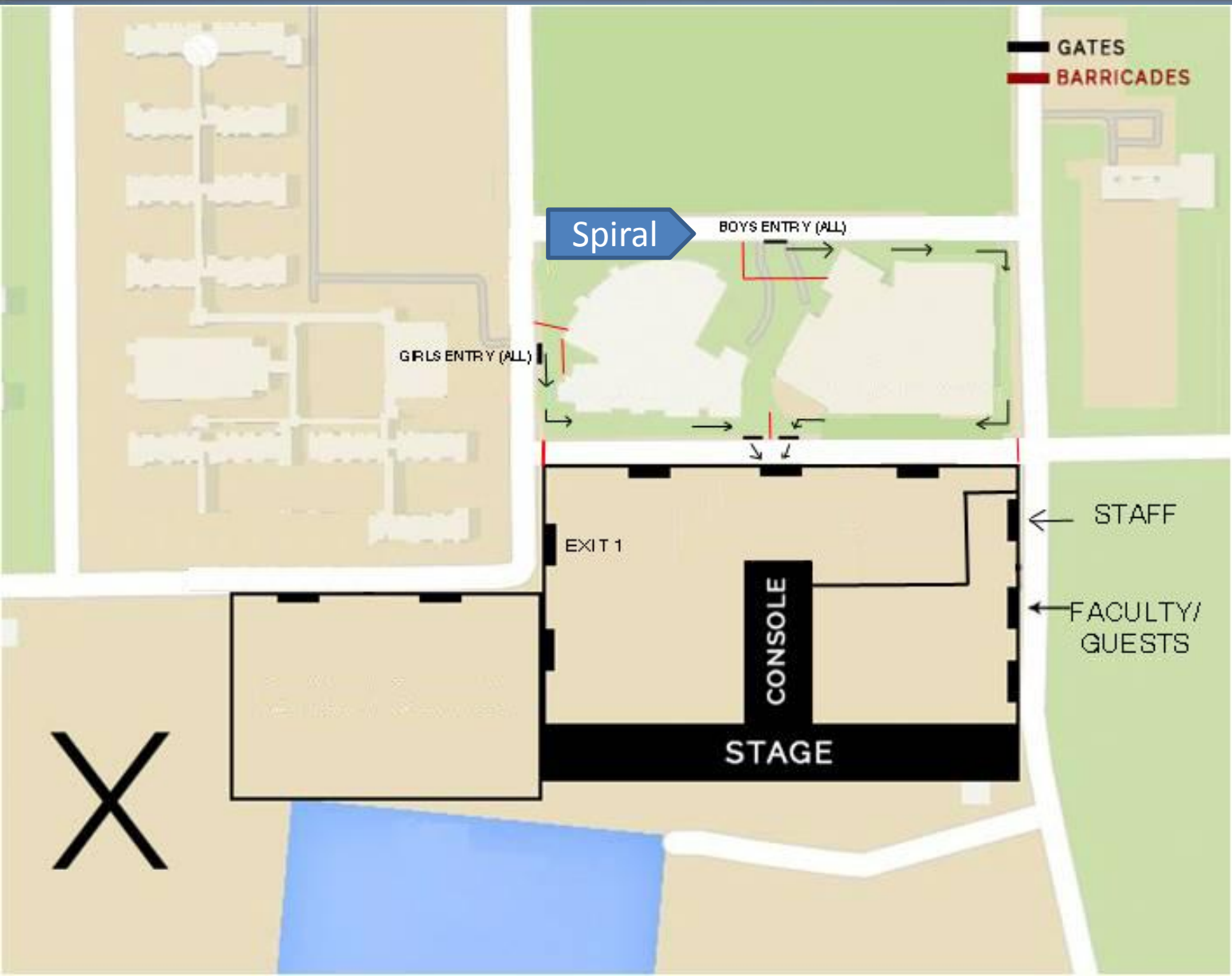
OAT Plan



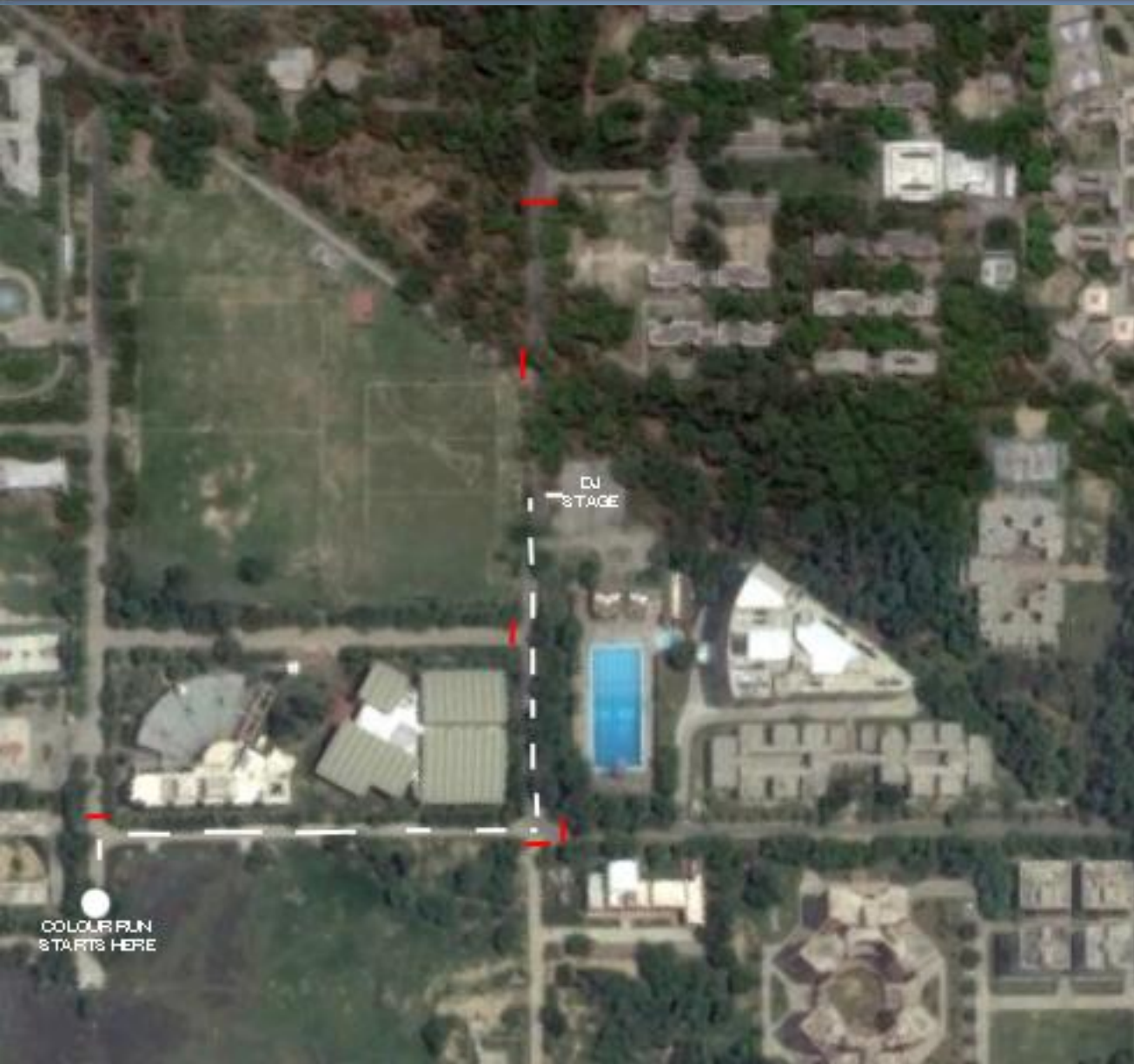
Audi Plan



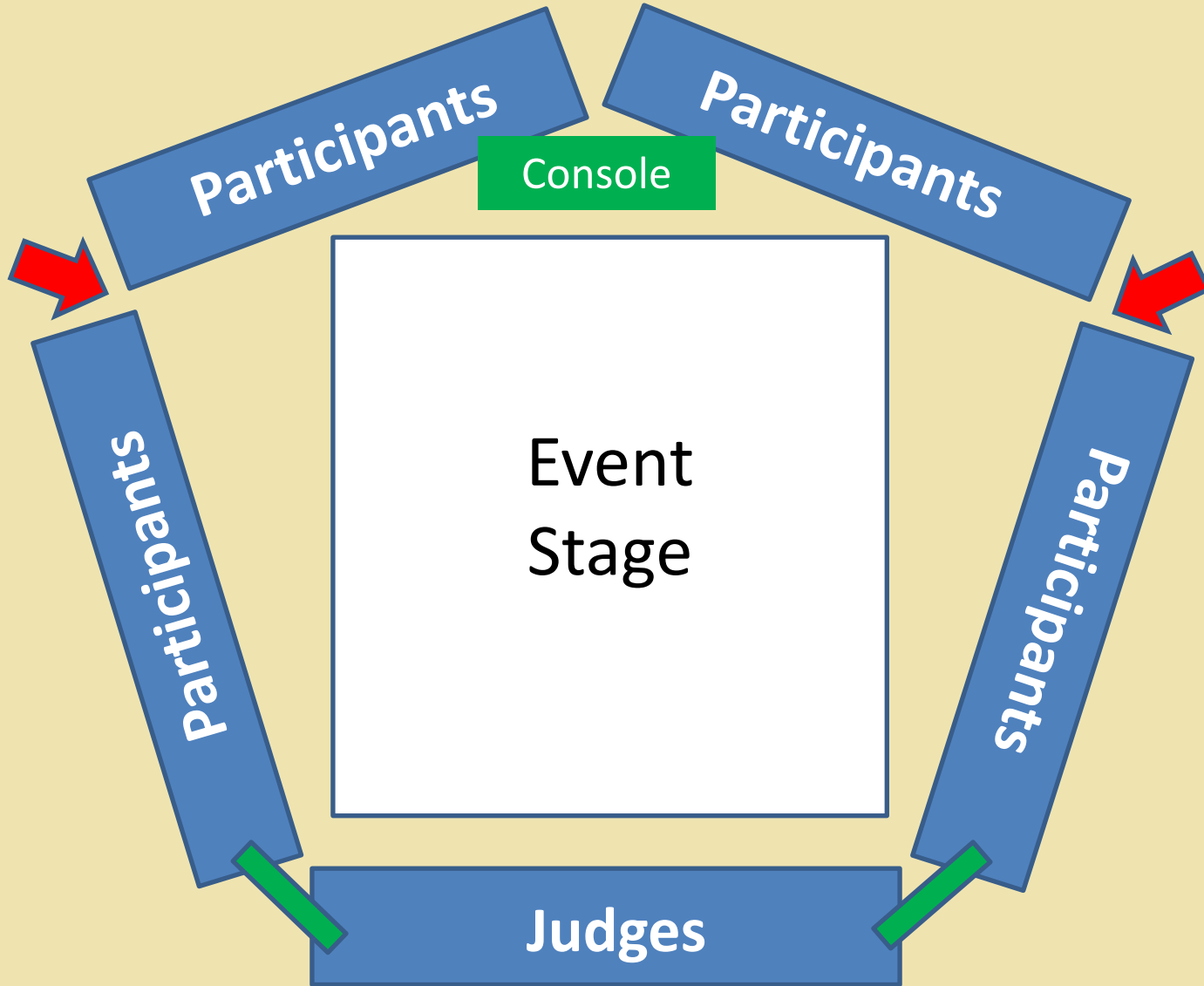
Pro-night Plan



Colour Run



Festival Ground Plan



Team Structure



- 22 teams consisting of 1 PSO, 2 SSOs and 4 SOs are formed.
- 6 teams of GSO`s are formed to look into the problems specifically related to female participants.
- STF is 26 member strong consisting of 5 girl members.



Open Fest



- A SIS guard along with the hospitality volunteer will manually record the details of open fest participants, check-in time and check-out time after seeing the fee receipt
- Registration desk would be set up at the main gate for single day registrations
- Day wise coloured bands would be given to participants for unique identification
- 300 daily registrations
- Failure to comply with any of the open fest rules shall result in penalties depending on the severity of the issues



Pass Policy



- Faculty- Entry will be on the basis of ID card. In case if faculty is absent, entry of family on health booklets(max 4)
- SBRA/RA- Entry will be on the basis of ID and health booklet for married people(max 2)
- Staff - Entry will be on the basis of ID and health booklet for married people(max 2)
- Media pass- Entry will be on the basis of passes, single entry and unrestricted
- VIP pass – single and double entry passes for the sponsors
- Guest pass – single entry passes for institute guests
- Alumni pass – single entry unrestricted passes
- Workers – Worker passes are issued with a photo



General Guidelines -1



- Bags, laptops, cameras, and eatables will NOT be allowed inside the Pro- Nite Ground
- Carrying of institute-card is compulsory and has to be shown whenever demanded.
- Consumption of liquor, smoking or any of the intoxicants is prohibited
- The roads connecting Hall-VIII and Swimming Pool (between New SAC and football ground), the one behind New SAC will have restricted
- Motorized vehicles will not be allowed beyond Hall 4 main entrance
- Entry will be on first come first serve basis.
- Any potentially hazardous objects are not allowed inside any event venue.



General Guidelines -2



- Areas behind Hall 10, Health Centre, OAT rooftop, faculty apartments and air strip are out of bound during Antaragni.
- Non IITK participants are not allowed in Academic area after midnight
- Non IITK Boys will not be allowed inside girls' accommodation anytime
- Girls will be allowed inside boy's accommodation till midnight but shall be restricted within the common areas
- All the guidelines related to security would be provided to the participants at the time of registration

Antaragni team can take any action in case of failure of any of the guidelines depending on magnitude of the situation



HALL – 12 security



- Non IITK participants will be from Hall-9 side.
- View cutters will be installed as discussed with the security section
- 2 lady guards will be placed on the gate for the checking
- Participants will be clearly informed about Women cell and ICC , link to above will also be shared with them

They would also be informed that they can contact the women standing committee directly if they deem suitable

- Only girls will allowed inside the allocated blocks
- B,C,D,E blocks would be used



Entry and exit plans



ENTRY ARRANGEMENTS

Entry will start 1.5 hours prior to the commencement of the event.

Students:

- a. The entry of IITK students will be through their I-cards.
- b. The entry of non IITK participants will be through their college I-cards along with their participant bands.
- c. For the Open-Fest participant's entry will be allowed on the basis of their wrist band.

EXIT ARRANGEMENT

All the students and Faculty/Staff should EXIT from the same gate from which they enter.

PARKING

Security guards will be there to assist in parking in areas shown at map



Accommodations



- Girls

Hall 12 + gh1+ght

- Boys

Hall 2, 3, 5,7,9,10,11, RA tower hall, Type 3,4,6

- Guest rooms

Hall 4, Cc2, VH, VHE, New SBRA





Thank You

